



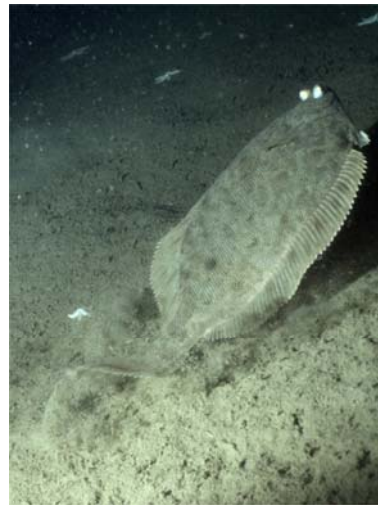
Goosefish *Lophius americanus*



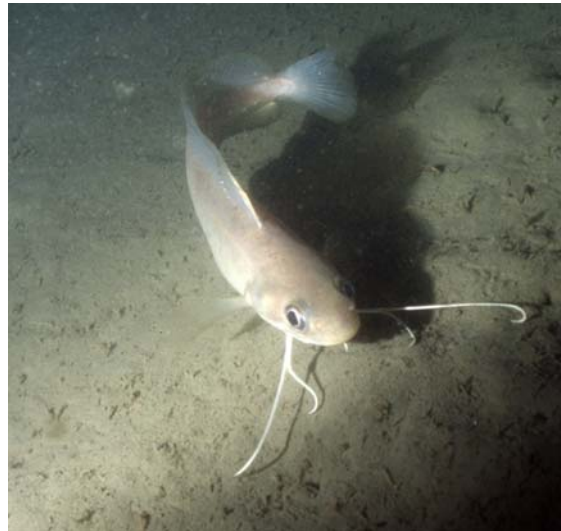
Ocean Pout *Macrozoarces americanus*



Winter Flounder *Pleuronectes americanus*



Sculpin *Myoxocephalus* spp.



Red Hake *Urophycis chuss*

**Plate 4.3-3** High resolution ROV still photos of representative fish species observed at the Mud Hole and Little Tow