



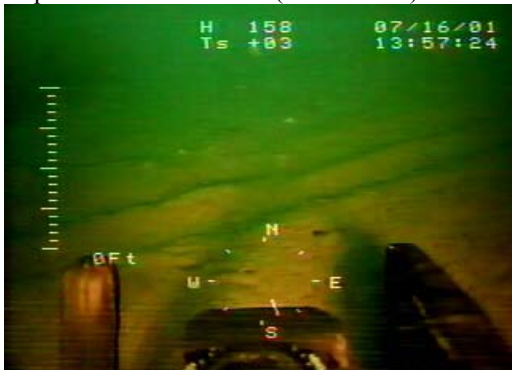
Shallow door impacts and smoothing of sediment at northern Mud Hole - MH-1C post (left) and MH-1B post (right)



Deeper, up to six inch, trawl door furrows in the softer sediment at southern Mud Hole - MH-3A post (left) and MH-3C post (right)



Exposed Bamboo Worm (*Maldanidae*) tubes at Mud Hole – left image (MH-3C post) and right (MH-3B post)



Shallower 2 to 4 inch deep trawl door furrows in the coarser sediment of southern Little Tow - left image (LT-3A post) and right image (LT-3B post)

Plate 4.3-6 Trawl impacts showing door furrows and bottom smoothing at Mud Hole and Little Tow