

CR ENVIRONMENTAL, INC.

Ecological & Oceanographic Consultants, East Falmouth, Massachusetts 02536

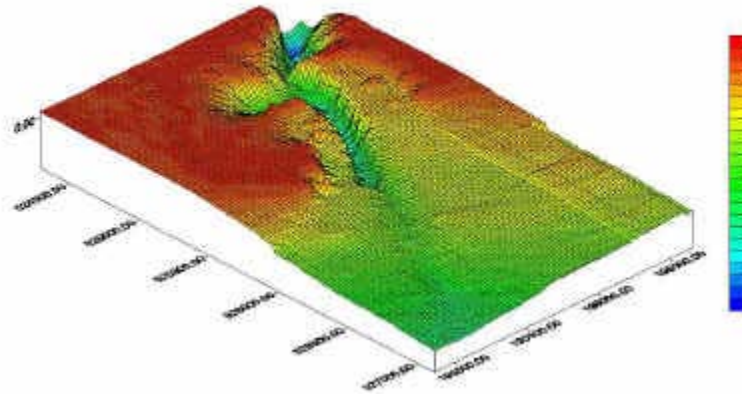
Pre- and Post-Dredge Bathymetric Surveys of Allen Harbor, Narragansett Bay Davisville, Rhode Island

In September 1998, CR Environmental, Inc. performed a pre-dredge bathymetric survey of the entrance channel to Allen Harbor at the Naval Construction Battalion Center in Davisville, Rhode Island for Foster Wheeler Environmental Corporation. Two subsequent surveys were conducted in December 1999 and January 2000 to determine the volume of dredge material which had been removed from the channel. CR delivered accurate volume calculations, scaled plans, and digital data.

The survey was conducted aboard R/V Cyprinodon using a high-precision digital echosounder, HYPACK survey software and a 12-channel Trimble DGPS. All data were corrected for tidal fluctuations using data collected from a 2-channel vibrating wire transducer pair.

Reference:

Dan Sullivan
Foster Wheeler Environmental
Corporation
151 Marine Road.
North Kingstown, Rhode Island 02852



Pre- and post-dredge bathymetric surveys of the entrance channel to Allen Harbor

