

CR ENVIRONMENTAL, INC.

Ecological & Oceanographic Consultants, East Falmouth, Massachusetts 02536

Geophysical Surveys of New York Reservoirs

**Cannonsville, Pepacton, Neversink, Ashokan, Schoharie, Rondout, and West Branch Reservoirs
Catskill Mountains, New York**

CR Environmental provided the survey vessel *Cyprinodon*, geophysical survey and sampling equipment, and logistic support on an extensive bathymetric and sub-bottom survey program at seven reservoirs in the Catskill/Delaware range for GZA GeoEnvironmental under contract to the New York City Department of Environmental Protection (NYCDEP).

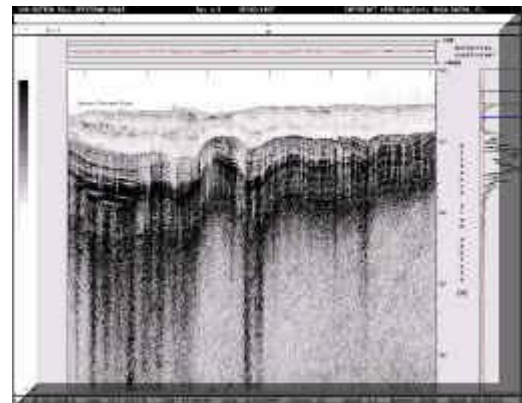
Over the course of the four month field effort, over 1500 line miles were surveyed, and 1000 sediment grabs and 200 box cores collected for chemical analyses and nutrient flux measurements to help calibrate and verify reservoir hydrodynamic and water quality models. The work was mandated by the USEPA Filtration Avoidance Determination which required that NYCDEP have the capability of accurately assessing potential sources of contamination in New York City's drinking water supply.

The Ecosystems Center, Woods Hole, MA, under contract to CR Environmental is preparing a paper synthesizing the data.

Steve Roy
GZA Geoenvironmental, Inc.
320 Needham Street
Newton Upper Falls, MA 02164
617-630-6321



Box coring operation in Rondout Reservoir off the stern of R/V Cyprinodon.



*Sub-Bottom profile of bottom showing thin layer of sediment over native hydric soil and riverine or glacial outwash.
(click for larger image)*